

biodesign

Exhibition on the Cross-Pollination of Nature, Science and Creativity

BIOREACTOR FACADE

by SSC Strategic Science Consult GmbH, Germany (2013)



BIOREACTOR FACADE

by SSC Strategic Science Consult GmbH, Germany (2013)



Within the bioreactors there are micro-algae cultivated that produce biomass and warmth through photosynthesis.



The bioreactors moreover serve to regulate the incident solar radiation but also as a protection against cold or noise prevention.

PALMLEATHER

by Tjeerd Veenhoven, Netherlands (2011 - 2014)



PALMLEATHER

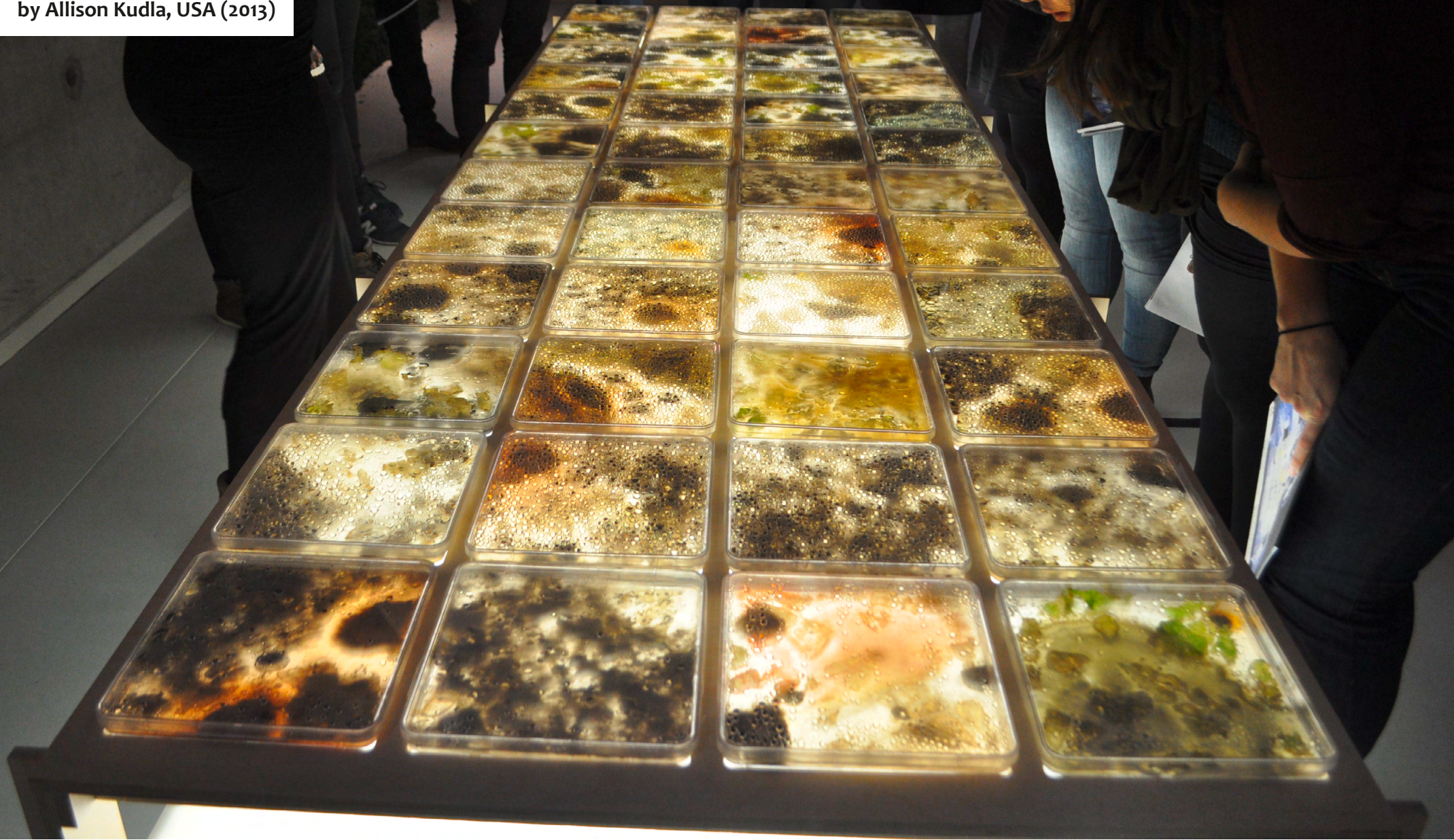
by Tjeerd Veenhoven, Netherlands (2011 - 2014)



products made from the palmleather

GROWTH PATTERN

by Allison Kudla, USA (2013)



GROWTH PATTERN

by Allison Kudla, USA (2013)

Each petri dish consist of a pattern made from tobacco leaves. Than using a growth nutrition to help the leaves reproduce more leaves.



GROWTH PATTERN

by Allison Kudla, USA (2013)



http://www.youtube.com/watch?v=gw_O1hsY8Rw

SNAILS

by Lieske Schreuder, Netherlands (2012)



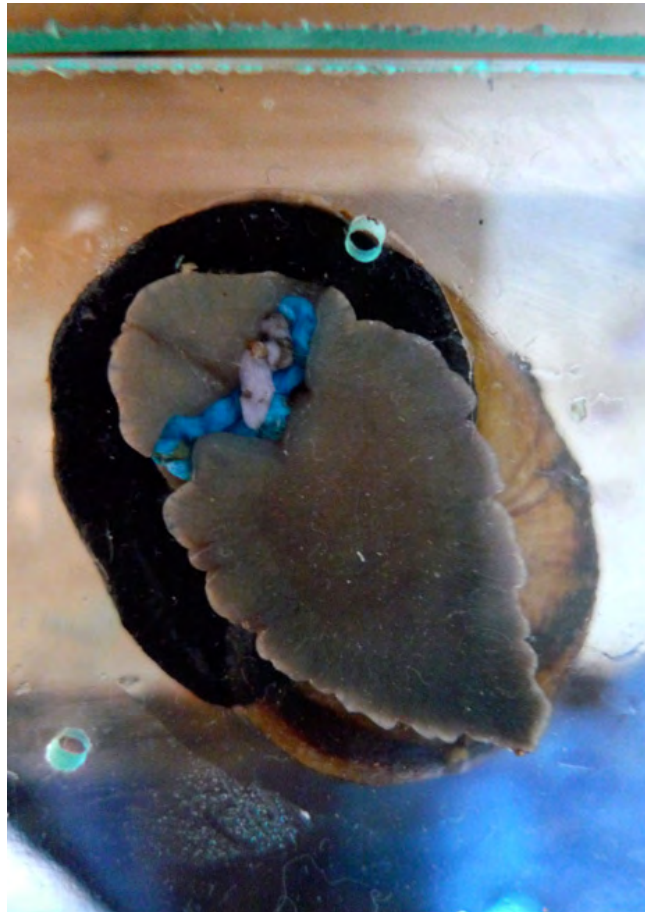
SNAILS

by Lieske Schreuder, Netherlands (2012)



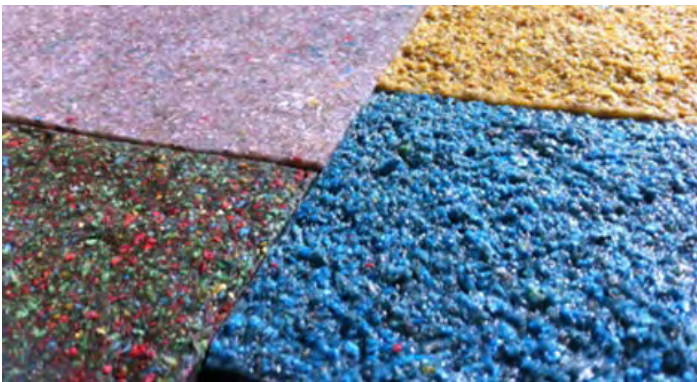
SNAILS

by Lieske Schreuder, Netherlands (2012)



SNAILS

by Lieske Schreuder, Netherlands (2012)



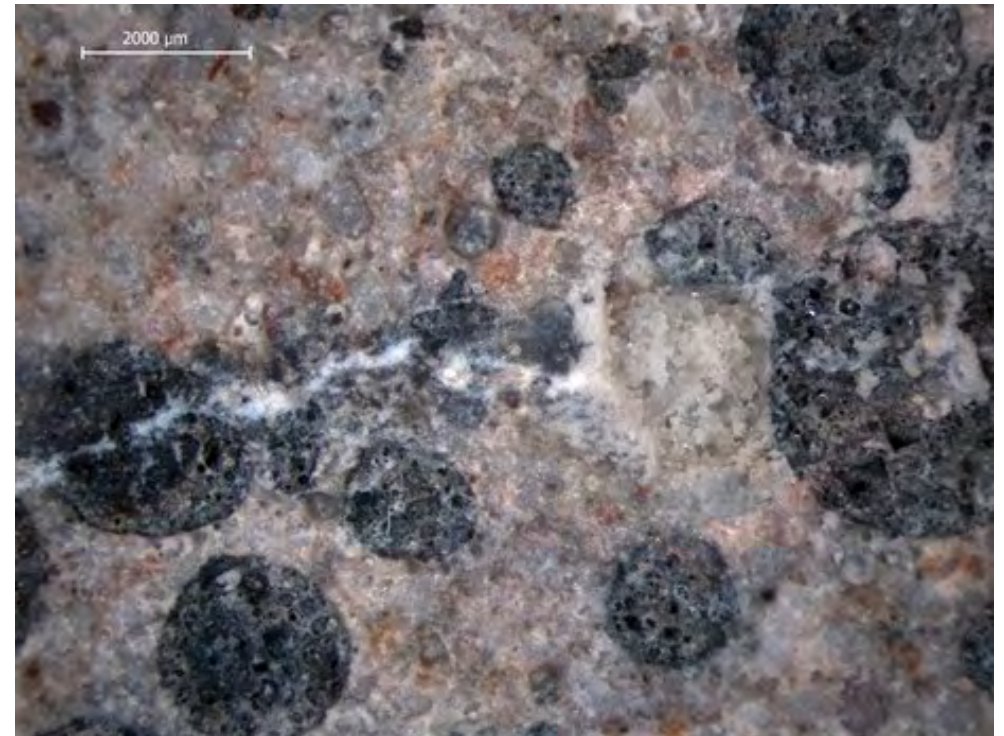
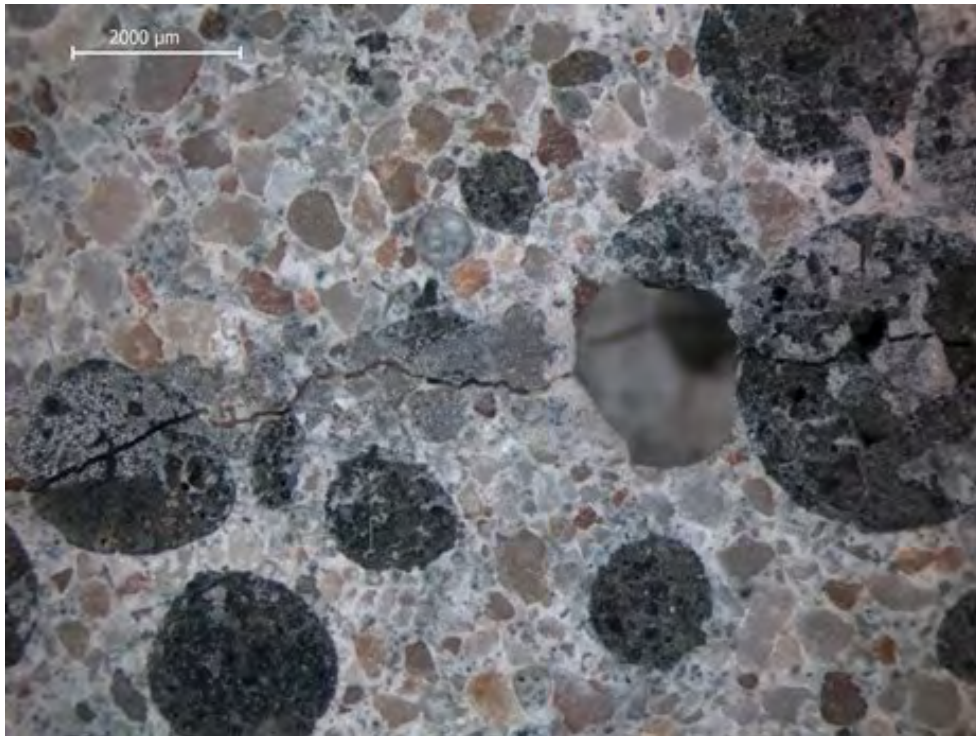
BIO CONCRETE

Henk Jonkers, CiTG Microlabe Delft University of Technology, Netherlands (2009)



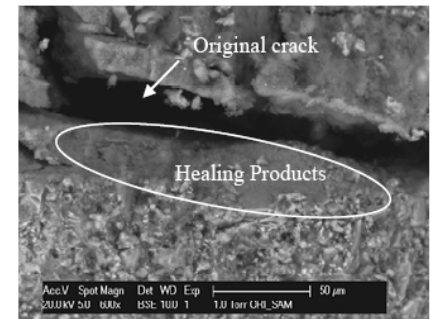
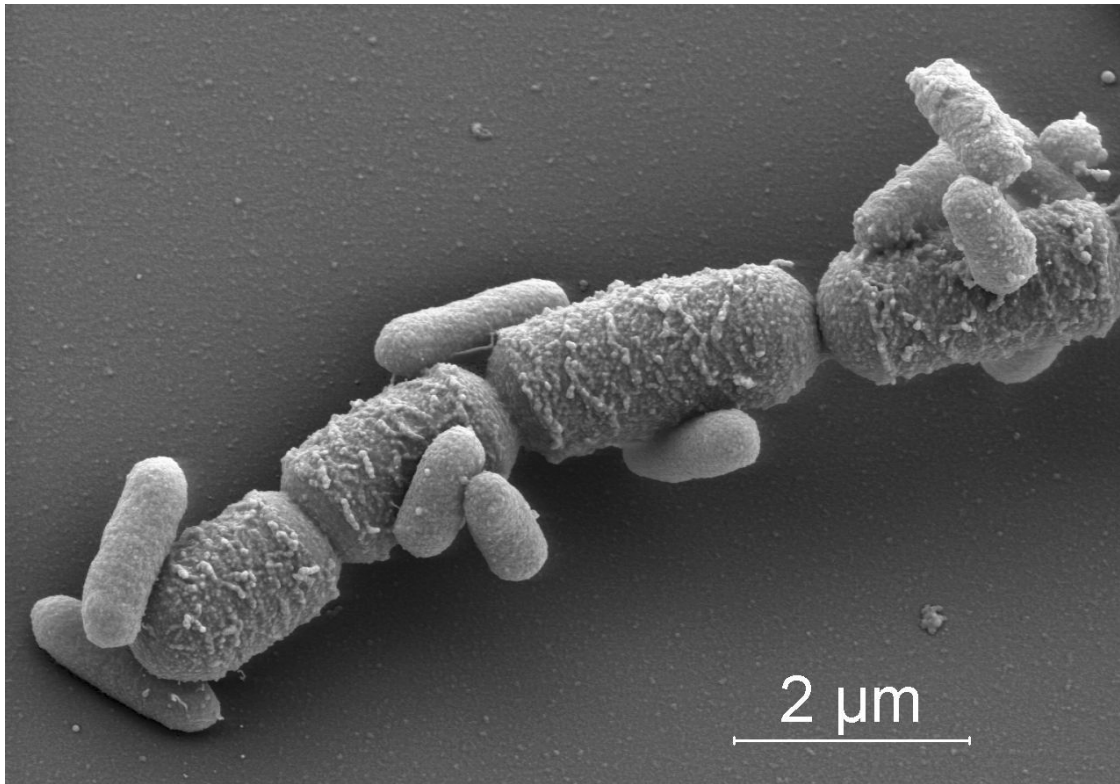
BIO CONCRETE

Henk Jonkers, CiTG Microlabe Delft University of Technology, Netherlands (2009)



BIO CONCRETE

Henk Jonkers, CiTG Microlabe Delft University of Technology, Netherlands (2009)



FARM 432

by Katrina Unger



FARM 432

by Katrina Unger



FARM 432

by Katrina Unger



<http://www.kunger.at/161540/1591397/overview/farm-432-insect-breeding>

BIO CITY MAP

by Terreform ONE, Mitchell Joachim, Maria Aiolova,
Nurhan Gokturk, Melanie Fessel, USA (2013)



BIO CITY MAP

by Terreform ONE, Mitchell Joachim, Maria Aiolova,
Nurhan Gokturk, Melanie Fessel, USA (2013)



bacteria cultures that are modified with fluorescent proteins

BIO CITY MAP

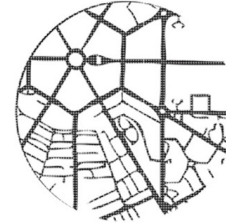
by Terreform ONE, Mitchell Joachim, Maria Aiolova,
Nurhan Gokturk, Melanie Fessel, USA (2013)

FIGURE GROUND MAP



NEW DELHI

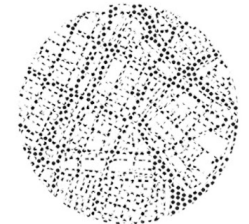
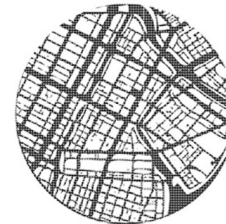
PROCESS MAP



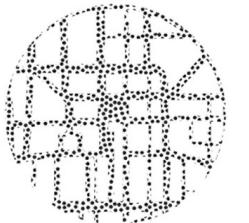
BACTERIA PATTERN



TOKYO



BEIJING



BIO CITY MAP

by Terreform ONE, Mitchell Joachim, Maria Aiolova,
Nurhan Gokturk, Melanie Fessel, USA (2013)



Sticks in different lengths reveal a pattern of the population growth made by the bacteria.

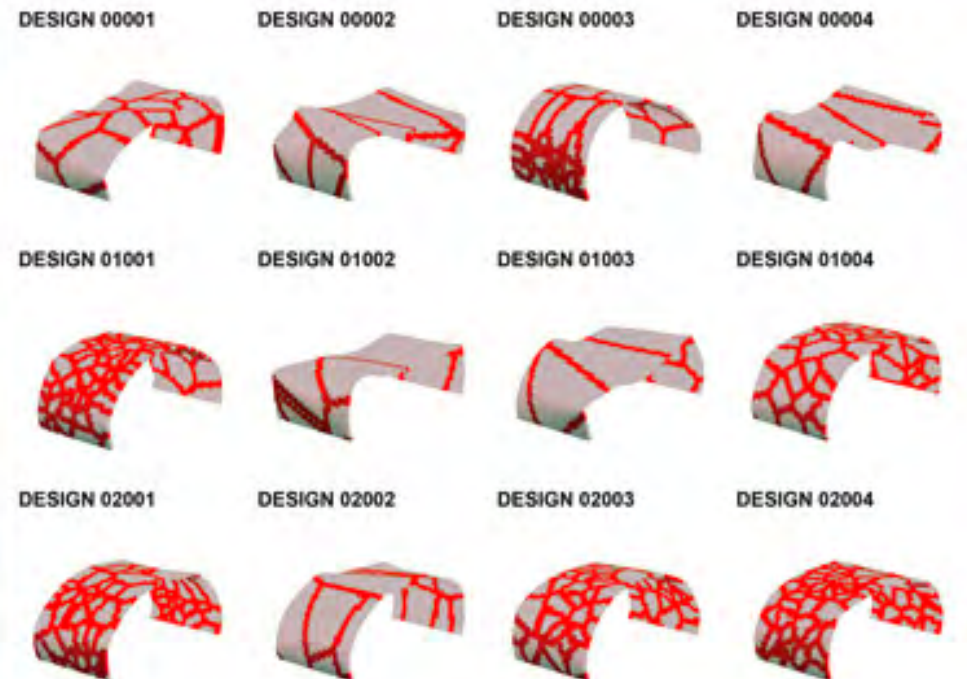
BIO COMPUTATION AND BIO PROCESSING

by David Benjamin, Fernan Federici for Bioprocessing,
United states (2011 – ongoing)



BIO COMPUTATION AND BIO PROCESSING

by David Benjamin, Fernan Federici for Bioprocessing,
United states (2011 – ongoing)



BULLET PROOF SKIN

by Jalila Essaïdi, Netherlands (2011)



reinforces human skin cells with spider silk

BULLET PROOF SKIN

by Jalila Essaïdi, Netherlands (2011)



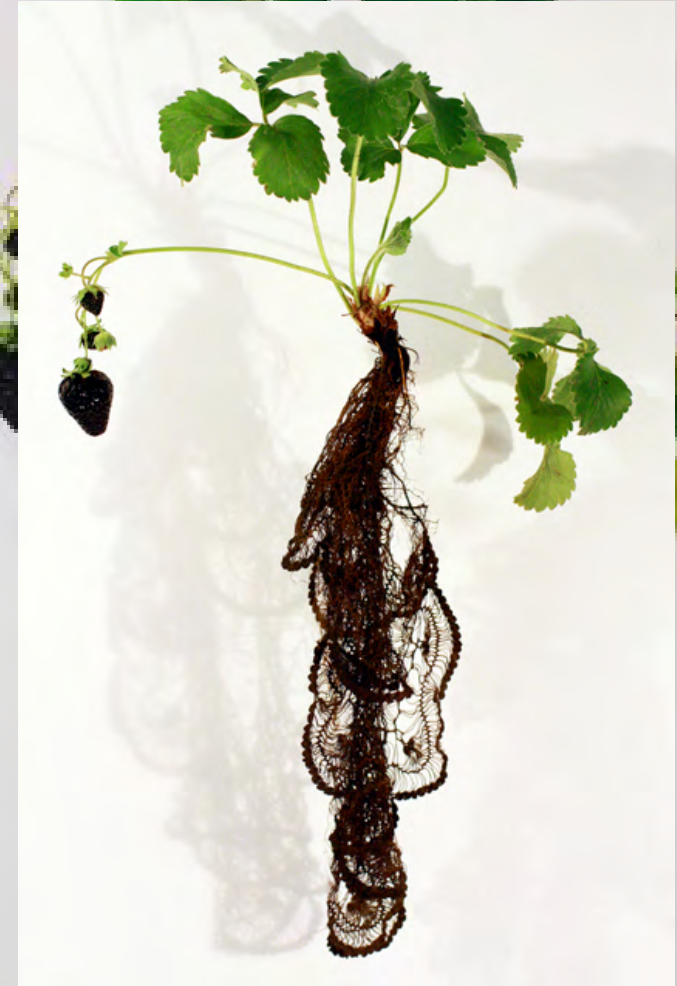
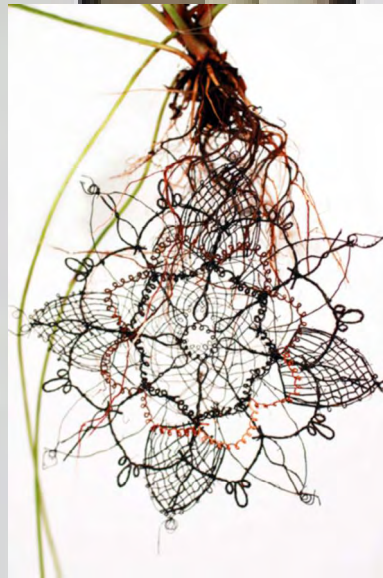
<http://www.dailymail.co.uk/sciencetech/article-2094364/Bio-engineered-bulletproof-skin-human-cells-spider-silk-revealed-video.html>

BIOLACE

by Carole Collet



Basil n°5 (Ocimum Basilicum Rosa)



Strawberry Noir (Fragaria Fusca Tenebris)

POST-NATURAL HISTORY

by Vincent Fournier



POST-NATURAL HISTORY

by Vincent Fournier



POST NATURAL HISTORY

IBIS [Ibis temperatio] Drought- and frost-resistant bird, 2012.



POST NATURAL HISTORY

SCORPION [Orbus chirurgia] Scorpion used for semi automated and remote surgery, 2013.

POST-NATURAL HISTORY

by Vincent Fournier



POST NATURAL HISTORY

CAT [*Felis spiritae*] Psychic medium for communications with the spirit world, 2013.



POST NATURAL HISTORY

RABBIT [*Oryctolagus cuniculus*] Very intelligent rabbit, 2012.